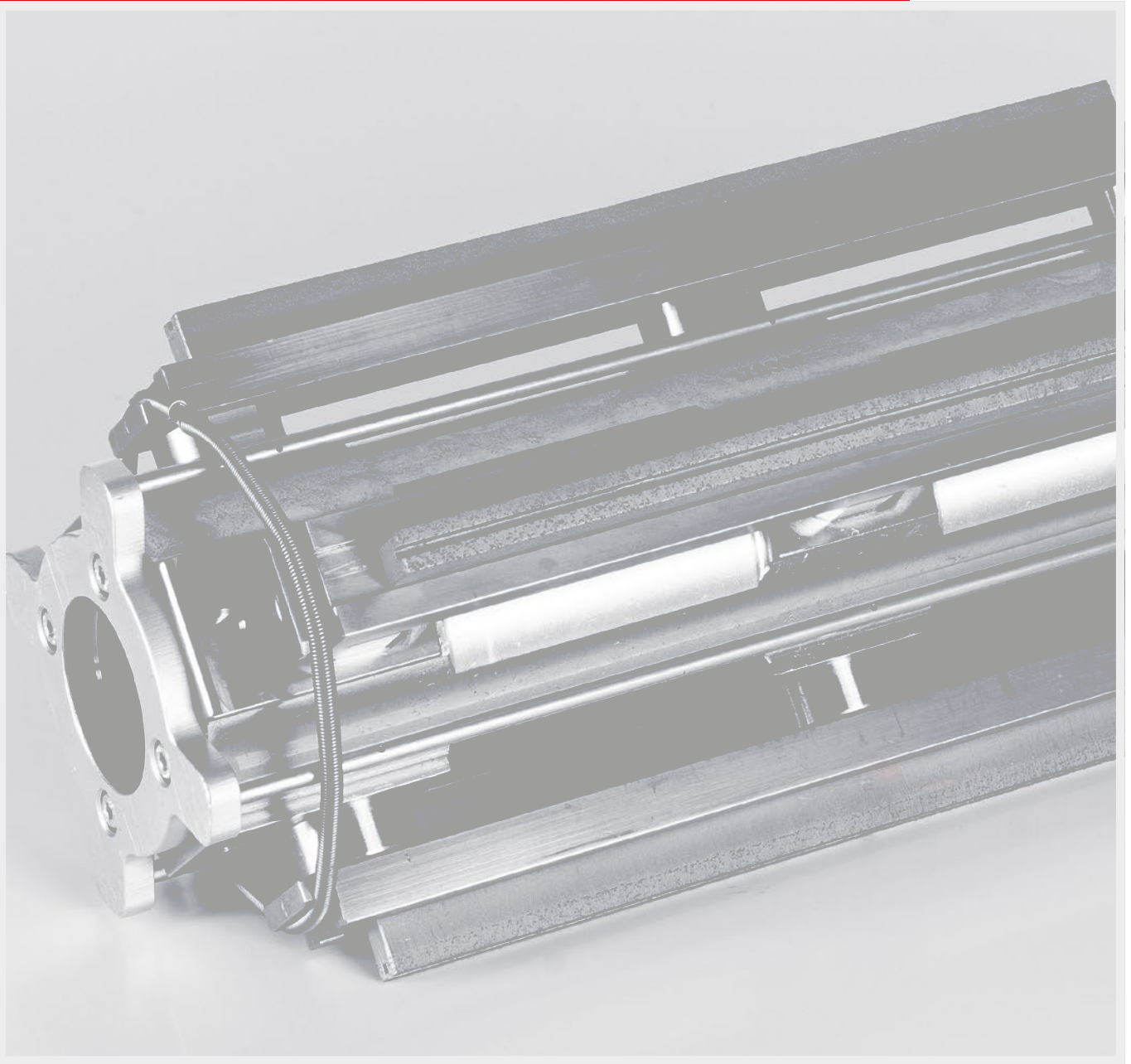


Deephone tooling system

Precision through DH tooling system



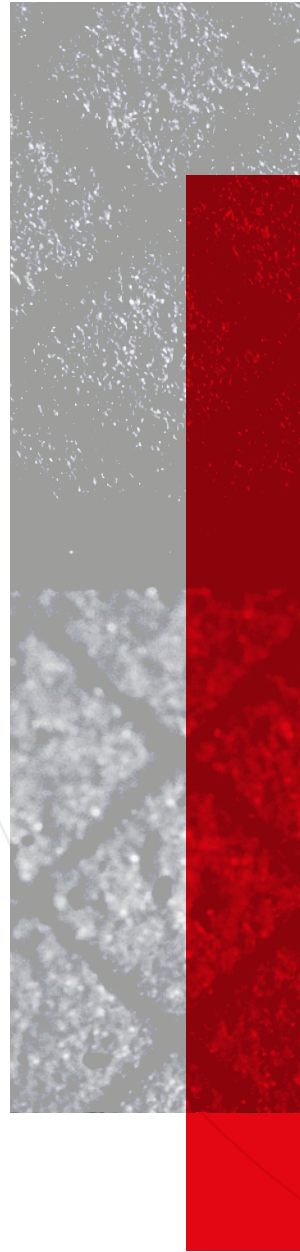
 **Gehring**

Excellence in motion.
Future in mind.

PRECISION Tooling system DH

Precision through DH tooling system

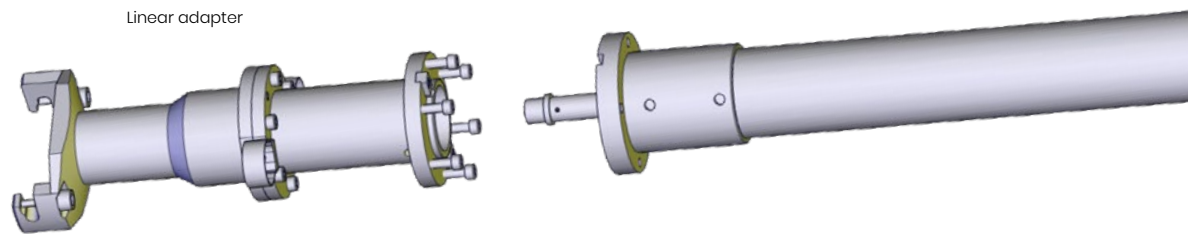
Precision and durability are the hallmarks of our tool systems. They guarantee maximum efficiency, optimized surfaces, and the best possible bore geometries. At the same time, the high degree of standardization results in reduced manufacturing costs - a further customer benefit in terms of cost-effectiveness in application. Benefit from proven components with a long service life and use the Gehring tooling system DH that is optimally matched to the machine.



HONING

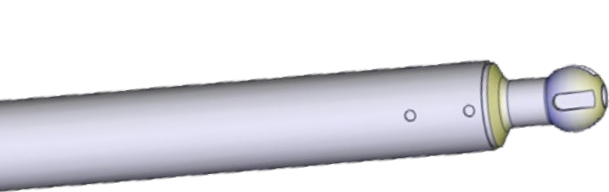
The newly developed multi-stone honing tool DH is characterized by its wide range of applications. The DH series is used for honing bores in a diameter range of 37 - 600 mm. Larger diameter ranges (600 - 1.000 mm) can be requested from our sales team.

Technical data tooling system DH-TN 37-95

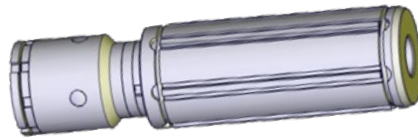


Diameter range	Adapter	Drive shafts without internal cooling / without measurement air				Drive shafts with internal cooling /		
		1.500 mm	3.000 mm	6.000 mm	10.000 mm	1.500 mm	3.000 mm	
		Drive shaft [in mm]				Drive shaft [in mm]		
37 - 46 mm	Linear adapter GNM-0651-201	AW-G1-0-0-1500	AW-G1-0-0-3000					
46 - 55 mm		AW-G2-0-0-1500	AW-G2-0-0-3000	AW-G2-0-0-6000		AW-G2-1-0-1500	AW-G2-1-0-3000	AW-G2-1-0-6000
55 - 65 mm		AW-G2-0-0-1500	AW-G2-0-0-3000	AW-G2-0-0-6000		AW-G2-1-0-1500	AW-G2-1-0-3000	AW-G2-1-0-6000
65 - 75 mm		AW-G3-0-0-1500	AW-G3-0-0-3000	AW-G3-0-0-6000	AW-G3-0-0-10000	AW-G3-1-0-1500	AW-G3-1-0-3000	AW-G3-1-0-6000
75 - 85 mm		AW-G3-0-0-1500	AW-G3-0-0-3000	AW-G3-0-0-6000	AW-G3-0-0-10000	AW-G3-1-0-1500	AW-G3-1-0-3000	AW-G3-1-0-6000
85 - 95 mm		AW-G4-0-0-1500	AW-G4-0-0-3000	AW-G4-0-0-6000	AW-G4-0-0-10000	AW-G4-1-0-1500	AW-G4-1-0-3000	AW-G4-1-0-6000
95 - 110 mm		AW-G4-0-0-1500	AW-G4-0-0-3000	AW-G4-0-0-6000	AW-G4-0-0-10000	AW-G4-1-0-1500	AW-G4-1-0-3000	AW-G4-1-0-6000

37-95



Drive shaft

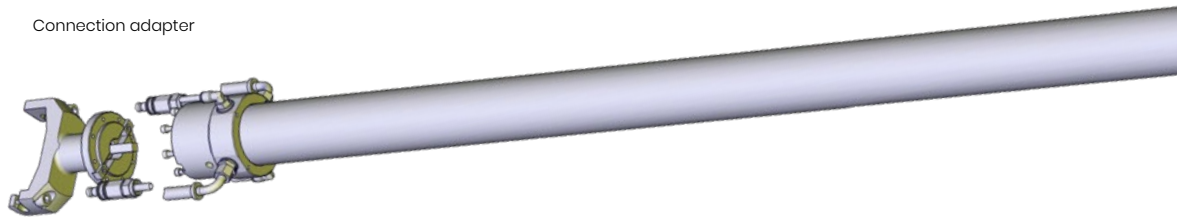


Honing tool

without measurement air		Drive shafts with internal cooling and with measurement air				Tooling system	Machinig diameter
6.000 mm	10.000 mm	1.500 mm	3.000 mm	6.000 mm	10.000 mm		
[in mm]		Drive shaft [in mm]					
						DH-TN-37	37 - 40 mm 40 - 43 mm 43 - 46 mm
AW-G2-1-0-6000						DH-TN-46	46 - 49 mm 49 - 52 mm 52 - 55 mm
AW-G2-1-0-6000						DH-TN-55	55 - 60 mm 60 - 65 mm
AW-G3-1-0-6000	AW-G3-1-0-10000					DH-TN-65	65 - 70 mm 70 - 75 mm
AW-G3-1-0-6000	AW-G3-1-0-10000					DH-TN-75	75 - 80 mm 80 - 85 mm
AW-G4-1-0-6000	AW-G4-1-0-10000	AW-G4-1-1-1500	AW-G4-1-1-3000	AW-G4-1-1-6000	AW-G4-1-1-10000	DH-TN-85	85 - 90 mm 90 - 95 mm
AW-G4-1-0-6000	AW-G4-1-0-10000	AW-G4-1-1-1500	AW-G4-1-1-3000	AW-G4-1-1-6000	AW-G4-1-1-10000	DH-TN-95	95 - 100 mm 100 - 105 mm 105 - 110 mm

Technical data tooling system DH 100 - 600

Connection adapter

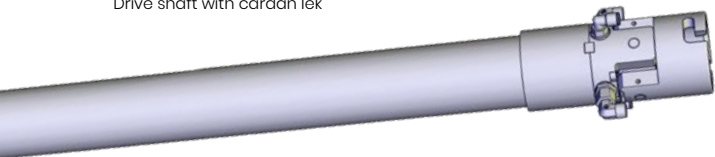


Diameter range	Adapter	Drive shafts without internal cooling / without measurement air				Drive shafts with internal cooling /		
		1.500 mm	3.000 mm	6.000 mm	10.000 mm	1.500 mm	3.000 mm	
		Drive shaft [in mm]				Drive shaft [in		
100 - 200 mm	Connection adapter GNM-0651-101							
200 - 300 mm								
300 - 400 mm		AW-DH-0-0-1500	AW-DH-0-0-3000	AW-DH-0-0-6000	AW-DH-0-0-10000	AW-DH-1-0-1500	AW-DH-1-0-3000	AW
400 - 500 mm								
500 - 600 mm								

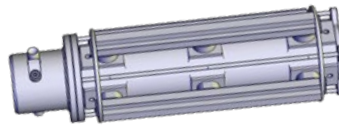
VALDAT

6000

Drive shaft with cardan lek



Honing tool DH



without measurement air		Drive shafts with internal cooling and with measurement air				Tooling system	Machinig diameter
6.000 mm	10.000 mm	1.500 mm	3.000 mm	6.000 mm	10.000 mm		
[mm]		Drive shaft [in mm]					
AW-DH-1-0-6000	AW-DH-1-0-10000	AW-DH-1-1-1500	AW-DH-1-1-3000	AW-DH-1-1-6000	AW-DH-1-1-10000	DH 100 - 200	100 - 133 mm 133 - 166 mm 166 - 200 mm
						DH 200 - 300	200 - 233 mm 233 - 266 mm 266 - 300 mm
						DH 300 - 400	300 - 333 mm 333 - 366 mm 366 - 400 mm
						DH 400 - 500	400 - 433 mm 433 - 466 mm 466 - 500 mm
						DH 500 - 600	500 - 533 mm 533 - 566 mm 566 - 600 mm

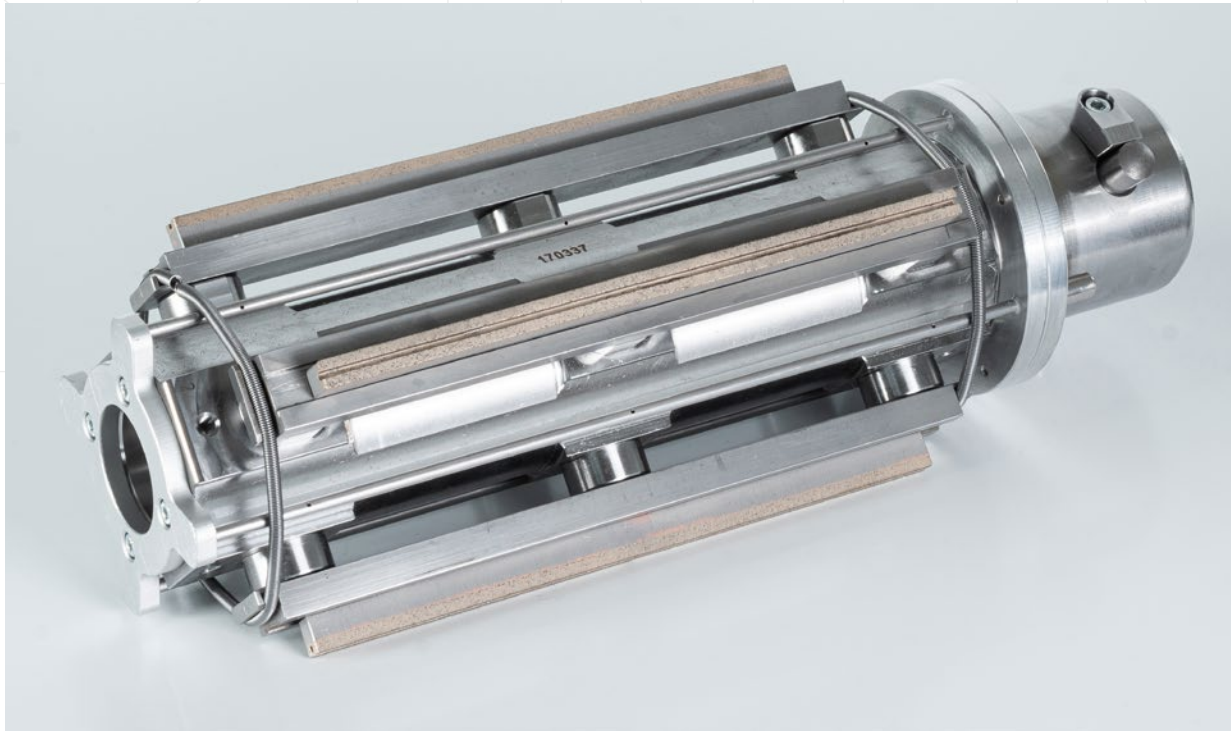
i From a diameter >600 customized on request

Your benefits

Discover the advantages of the DH tooling system: efficiency, precision and performance in one.

Your advantages of the DH tooling system

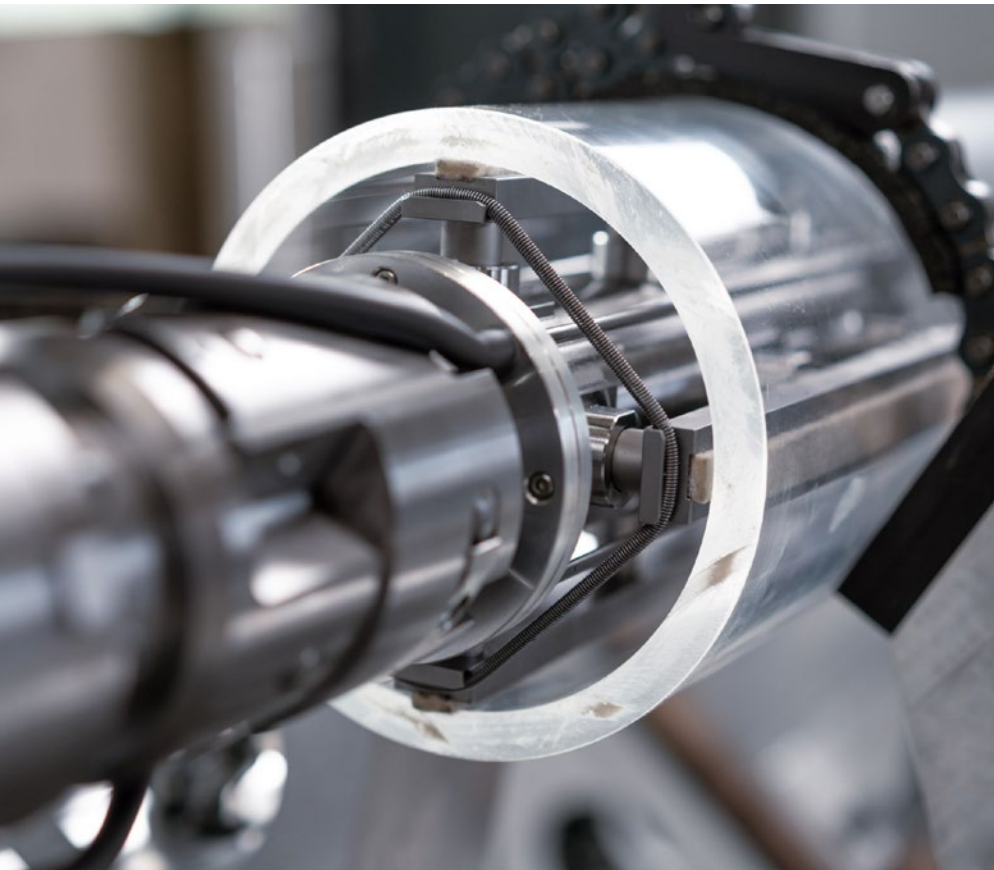
- ✓ **Low vibration**
Reduced vibration behavior due to integrated linear infeed in the tool body compared to rotary infeed
- ✓ **Significantly noise-reduced honing process**
- ✓ **Very good cutting performance**
high process stability, avoidance of manual interventions
- ✓ **Flexible design of the abrasives**
to the respective application possible. Designed for both ceramic and diamond abrasives
- ✓ **Abrasive selectable**
from 100 mm - 300 mm depending on application
- ✓ **Honing tools with internal cooling**
cooling directly at the cutting edge, thus optimum cooling behavior during the cutting process
- ✓ **Tool with bayonet connection**
for fast tool change and shortest setup times
- ✓ **Significantly increased tool life**
robust tool construction, production Made in Germany
- ✓ **High-precision tool**
for optimum final qualities with triple-supported carrier bars for highly accurate roundness, straightness and cylinder shapes
- ✓ **Optionally with air measurement**
high dimensional accuracy requirements



DH tooling System with diamond abrasives

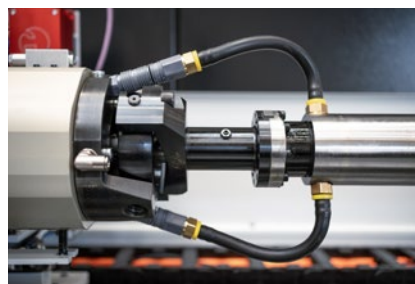


DH tooling system with ceramic abrasives



Typical Application areas

- Cylinder liners
- Hydraulic / pneumatic cylinders
- Extruder housing
- Large bearing housings
- Machine parts
- Aircraft landing legs
- Tubes
- Moulds or similar components



EXCELLENCE IN MOTION.

Innovative technologies, experience, global presence,
combined with economic mindset distinguish us.



www.gehring-group.com



Gehring Technologies GmbH + Co. KG
Gehringstraße 28 | D-73760 Ostfildern
T +49 711/3405-0 | E info.eu@gehring-group.com